

## Hot springs



Jinya's hot spring, welling up from the plentiful ground water of the Tanzawa mountain range, is known to be one of the most calcium-rich hot springs in the world. It is said that drinking of and bathing in the water is beneficial to sufferers of rheumatism, neuralgia, traumatic injuries and gastrointestinal disorders. We hope you will enjoy our hot spring facilities, which feature two outdoor baths as well as gender-segregated indoor baths.

.....

## Cuisine



From spring to winter, Jinya's kitchen features a delectable variety of fresh seasonal delicacies. Our wild boar stew recipe dates back to the 12th century. Yet, we also serve the refined dishes that epitomize contemporary Japanese cuisine, making the most of locally sourced ingredients in all our cooking. Our wish is for you to enjoy fine dining while contemplating the beauty of our Japanese garden.

物語に、息吹きを。  
Bringing history to life.



陣屋



## Maple trees ..... (B)-(5)

The brilliant hues of autumn foliage are among the most beautiful displays the Jinya garden has to offer. Early in the morning of a fine day, you can see the autumn leaves sparkle in the sunlight shining on the right side of the Nigiwai-tei terrace. On a calm, brisk autumn day, what's more invigorating than a deep breath of fresh air?



## Japanese cherry trees ... (E)-(3)

The Jinya garden is a widely popular cherry blossom viewing spot. In late March and early April, cherry blossoms in full bloom create spectacular white-pink canopies in the garden. We highly recommend making an early reservation for a room with a bird's eye view of the blossoms.

# Jinya's Natural Beauty

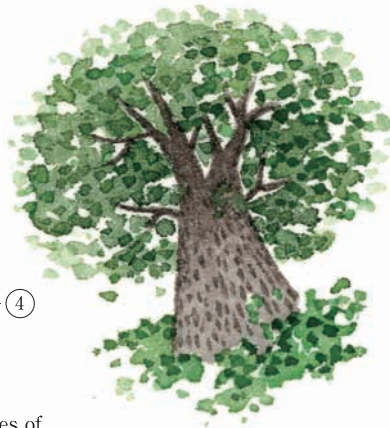
## River crabs ..... (C)-(3)

River crabs are among the creatures inhabiting the environs of Jinya. They survive only in fresh water and are actually a natural barometer of water quality. In the daytime, they hide under stones, but they will venture out on rainy days or to snack on the cabbage that we leave in the garden.



## Totoro camphor tree ... (C)-(4)

Hayao Miyazaki, the critically acclaimed animated film director, spent much of his childhood at the Jinya inn and his memories of that time have had a significant influence on his films. Just inside Jinya's main gate, on the right side of the pathway, you will come upon a giant camphor tree called "Totoro." It is an homage to *Tonari no Totoro (My Neighbor Totoro)*, Miyazaki's famous movie about the innocence of childhood.



## Fireflies ..... (D)-(3)

In late May and in June, you can find an abundance of fireflies darting about near the small river in our garden. Like their fleeting glow, these fireflies survive only a short period each year. Yet, they are the offspring of fireflies Jinya has protected year after year from the old days. Please observe them with care.



In Jinya's traditional Japanese garden, depending on the season, one can experience cherry blossoms in full bloom, river crabs scampering about, fireflies pulsing, and birds singing.

In our 8.2-acre garden, a variety of events have been staged in the pure elegance of nature. Feel free to take in the flowers, trees, and other living creatures of the garden while imagining some of the colorful stories that make up our long history.

It's all part of another relaxing day at Jinya.

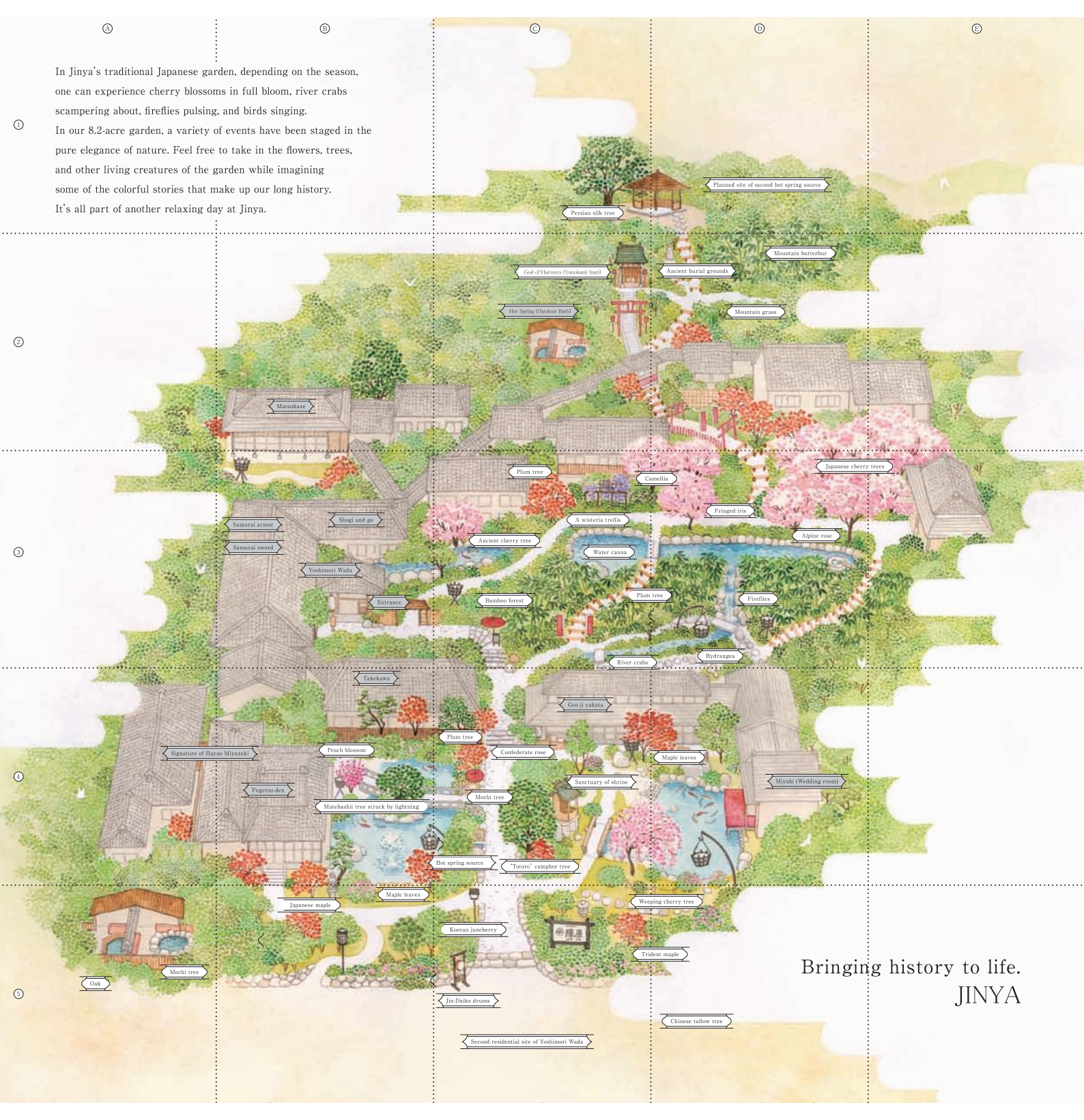
①

②

③

④

⑤



Bringing history to life.  
JINYA

## Yoshimori Wada, military commander ..... (B) - ③

Originally, the Jinya property was a base of operations for Yoshimori Wada, one of the four closest aides of Yoritomo Minamoto, the founder of the Kamakura Shogunate in the 12th century. He was renowned for his valor, loyalty and courage in battle. The Jinya property was attractive to the military for its hot springs as well as its bamboo—a component for making arrows.



## Samurai sword or *katana* ... (B) - ③

This *katana* is an heirloom of the Terao family of the Kumamoto clan (a former group of lords) who lived in southern Japan. The Terao family formed a close friendship with Musashi Miyamoto, one of Japan's most famous samurai (1584-1654). A friend of the Terao family, Miyamoto gave them his most precious belongings, including his books on swordsmanship. He also instructed them in advanced fighting techniques, such as dual swordplay. The katana pictured may have been used by Miyamoto in his later years.



## Shogi and go events ... (B) - ③

In 1952, an event that came to be known as the "Jinya Happening" rocked the world of *shogi*, a Japanese game similar to chess. Master Yoshio Kimura was due to defend his title against Kozo Masuda, who was ranked 8th. However, Masuda never showed up for the match. According to him, nobody came to welcome him and he left insulted. Yet Jinya staffers were apparently waiting at the entrance for him. Thus, the Jinya Happening, was a shogi showdown that failed to materialize, but no one knows what really "happened."



## Matsukaze ..... (B) - ②

Our luxury guest room, "Matsukaze," was originally built to serve as the second house of a group of domain lords as a place to entertain Emperor Meiji. The building was relocated to Jinya in the early 20th century and has been the site of master *shogi* and *go* tournaments. One of the building's special rooms is called "Shi-un Kaku." Although the room was built in the Meiji Era, its design is quite modern and decorated with valuable hand-made glass. Today, it can be reserved by guests and is frequently used for ceremonies such as weddings.



## Samurai armor from Motonari Mori • (B) - ③

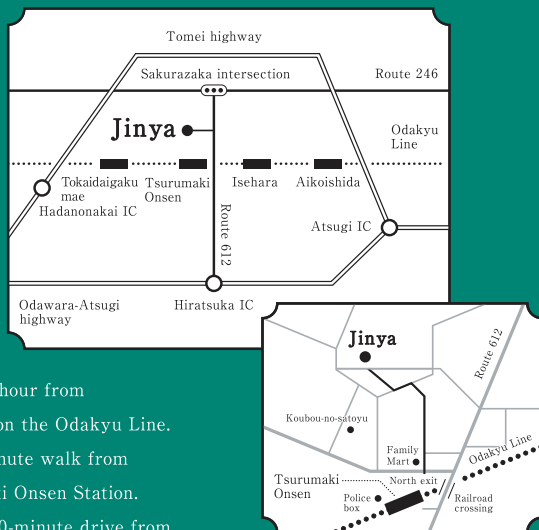
This armor is an heirloom of the Watanabe-Sakuzaemon family who served as retainers for Motonari Mori (a prominent lord or *daimyo* in western Japan during the 16th century). It was made in the Azuchi-Momoyama period in the late 15th and early 16th centuries. Sakuzaemon was a stand in for his master, Motonari, and died in place of him. This armor was said to have been given to the bereaved family as compensation for his honorable death.



## Jin daiko drums ..... (C) - ⑤

A jin daiko battle drum, formerly used to order troop movements, is located at Jinya's front entrance. We bang the drum to welcome or send-off our guests, and as a reminder of the extraordinary experience of staying at Jinya. See if you can notice the difference between welcome and farewell drumming.





About an hour from  
Shinjuku on the Odakyu Line.

A four-minute walk from  
Tsurumaki Onsen Station.

About a 20-minute drive from  
Atsugi IC on the Tomei highway.

About a 10-minute drive from Hiratsuka IC on Odawara-Atsugi highway.

The Tsurumaki Onsen resort is located near the hiking trails of  
Tanzawa Mountain. After a day of hiking, you can enjoy fine dining and  
relaxing hot springs at Jinya Ryokan.

Tsurumaki Onsen

## Jinya Ryokan

(Government-registered tourist hotel No.2378)

2-8-24 Tsurumaki-kita, Hadano-shi, Kanagawa 257-0001

Tel: +81-463-77-1300 Fax: +81-463-78-2808

[www.jinya-inn.com](http://www.jinya-inn.com)

## Garden



In Jinya's traditional Japanese garden, from season to season, one can experience cherry blossoms in full bloom, river crabs scampering about, fireflies glowing, and birds singing. The 8.2-acre garden, one of the largest in Kanagawa prefecture, offers a colorful bounty of natural beauty year round. It is also the place where Hayao Miyazaki, the renowned animated film director, spent much of his childhood. In the garden, his fond memories of nature have been carefully preserved.

## Guest rooms



Originally, Jinya was a vacation villa for friends and colleagues of the business conglomerate Mitsui Group. The Mitsui family would often entertain special guests at Jinya and the inn features a variety of special rooms, including the "Matsukaze" room—where *shogi* (Japanese chess) masters' tournaments are staged and *go* is played. Today, guests are welcome to enjoy the breathtaking luster of the garden illuminated by *kagari-bi* (Japanese torchlight).